

Customer :

customer

Customer part :

customer part

Comment :

Comment

S1=0.17

S2=0.85

Tmax=442

Tp S2=481.0

PI=0.17

HI=104

Sample =10625.5

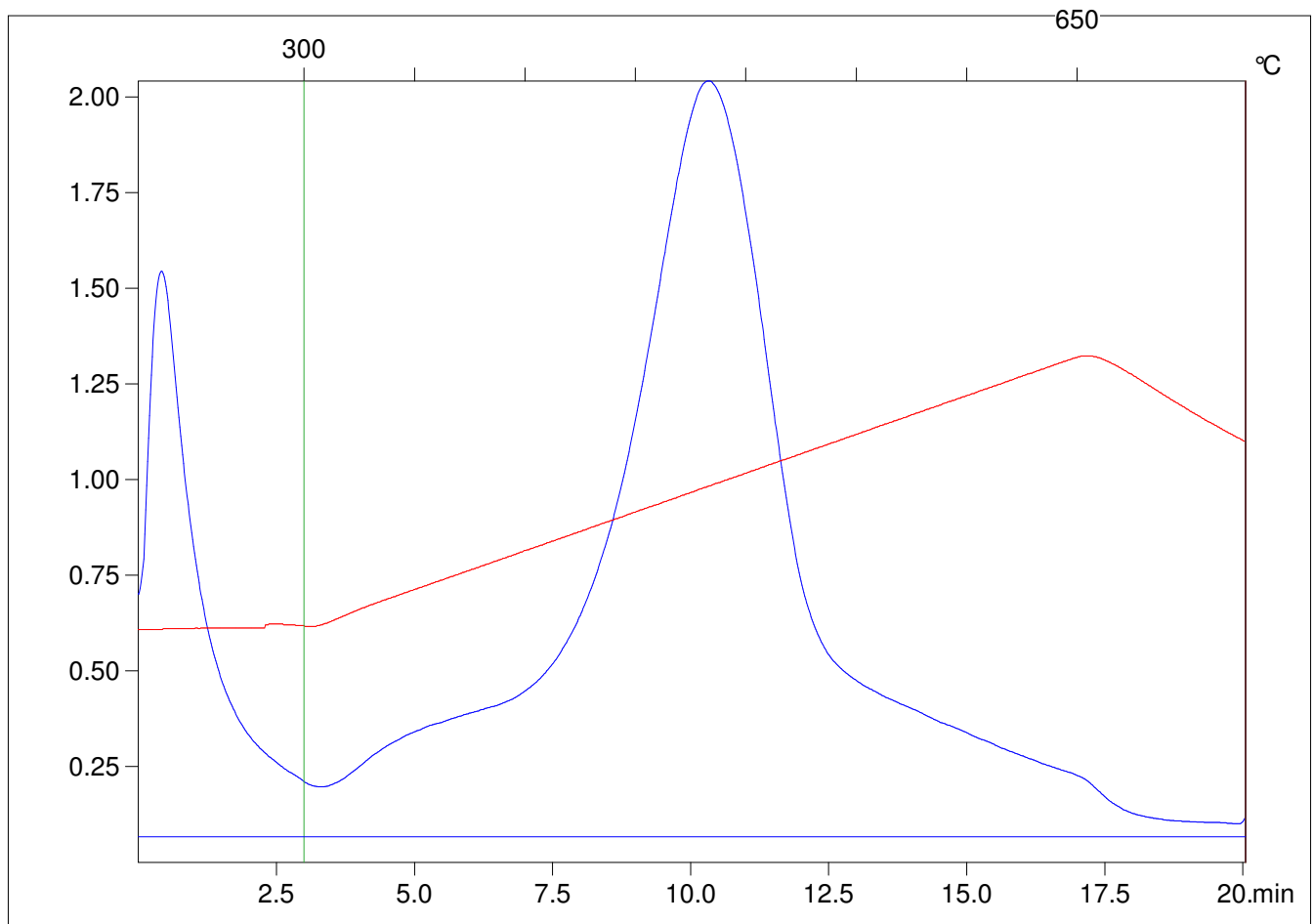
Method =Bulk Rock

Cycle=Basic

KFID(10*9)=1167

Qty =70.6

TOC=0.82



C:\VINC\PK141015\PK085.R00 : FID pyrolysis graphic

State

Pyro Status

Oxi Status